



An Exploration of Inclusion:

Smooth Transitions to Inclusion

Folsom Cordova CAC
February 28, 2024



SAM DRAZIN

- Certified Elementary Educator
- Nationally Recognized School Presenter
- Founder/Executive Director of Changing Perspectives

STAY CONNECTED

sam@cpne.org





Our goal is to educate, empower and inspire students from PreK through High School to become the change makers for tomorrow and to build a more inclusive, just and equitable society.

- 501(c)(3) educational non profit organization
- Partners with schools to promote social-emotional learning and cultivate inclusive and equitable learning communities
- Offering curriculum resources, educator professional development, & family engagement workshops

www.changingperspectivesnow.org



Changing Perspectives

School Based:

Four Elementary Schools to Grow Belonging

- ❖ Natoma Station Elementary: Inclusion during lunch and recess
- ❖ Rancho Cordova Elementary: Inclusive recess opportunities and physical inclusion
- ❖ Mangini Ranch Elementary: Building common language around inclusion and students with disabilities
- ❖ Cordova Gardens Elementary: Inclusive STEAM lessons for grades 3-5

Understanding Inclusive Models

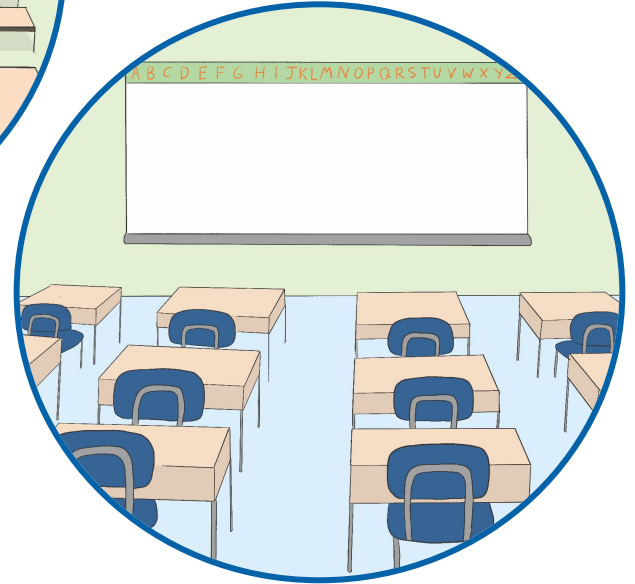
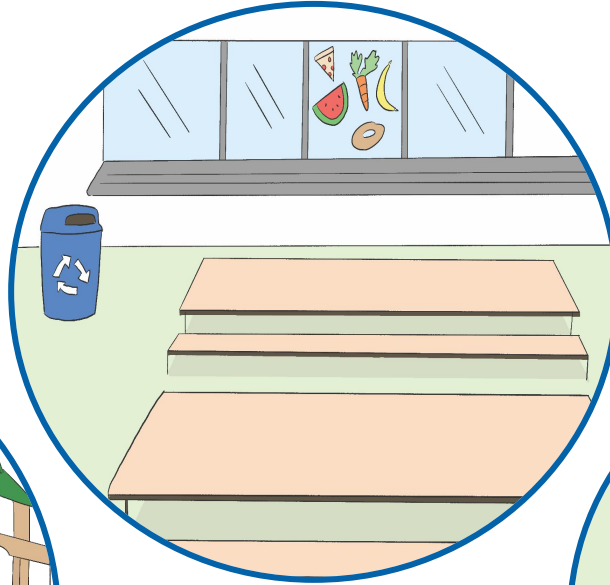
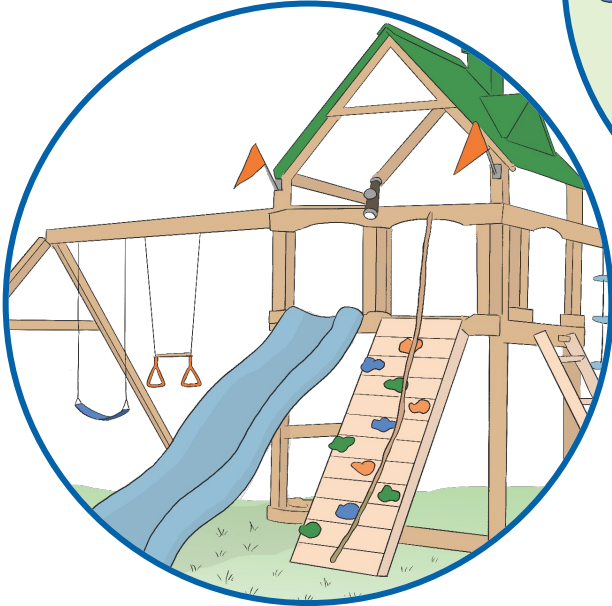
The background features a repeating pattern of stylized human figures in a lighter shade of green. These figures are arranged in a circular, interlocking fashion, with their arms raised and hands clasped, symbolizing unity and inclusivity. The figures are composed of simple geometric shapes like circles and arcs.

Inclusion Models

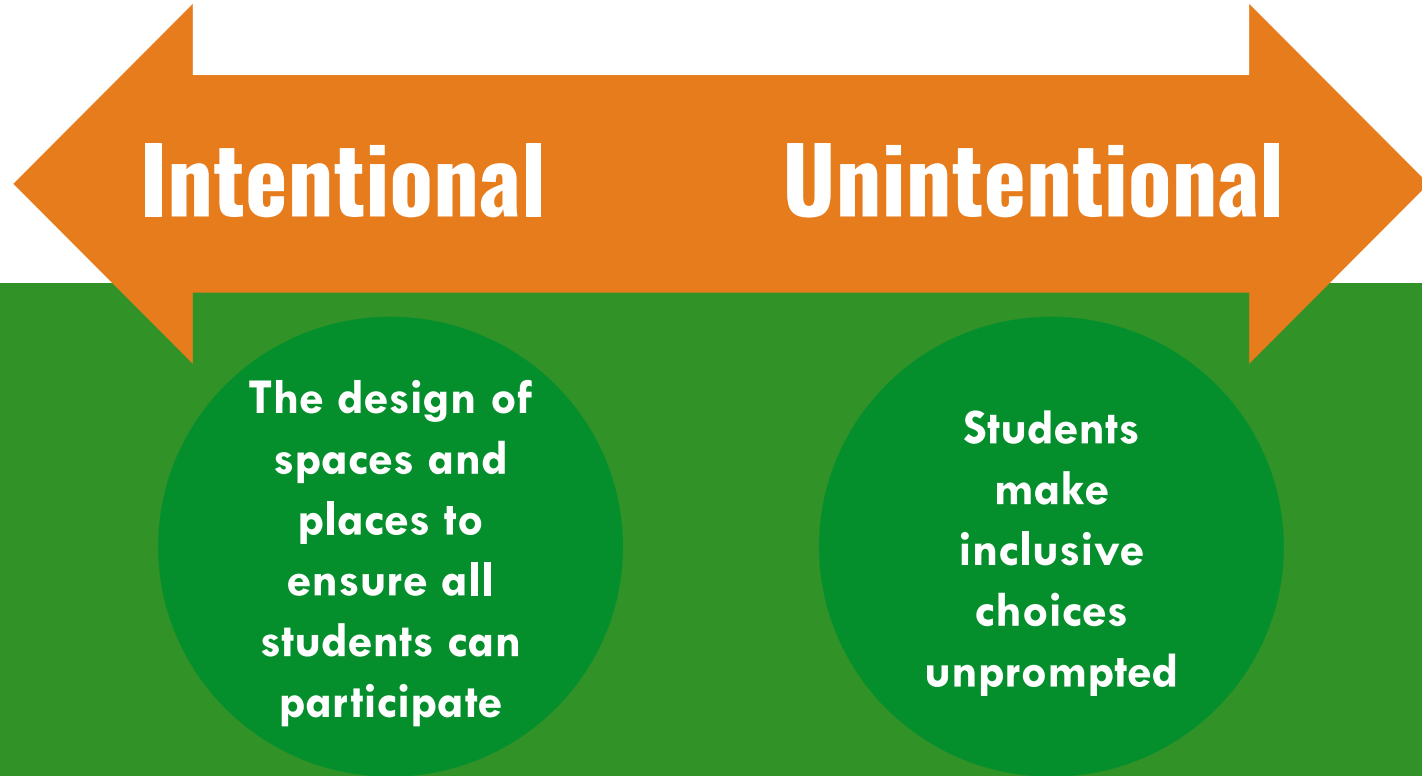
- Push In
- Pull Out
- Reversed Mainstreaming

Inclusion is...

EVERYWHERE!



Intentional vs Unintentional Inclusion



Unpacking Inclusion

3 COMPONENTS



Academic Inclusion:

- Academic Accessibility
- Academic Participation
- Sense of academic achievement
- Diversity Representation



Physical Inclusion:

- Design of spaces and places
- Sensory Inputs for success
- Access to spaces and places
- Access to materials



Social Inclusion:

- Inclusive Play
- Sense of belonging
- Ability to participate
- Community in which diversity is valued
- Everyone has a role



Consider what is meaningful inclusion for YOUR child?

- Meaningful inclusion doesn't look the same for all students
- Consider connecting inclusion to IEP goals
- Communicate your child's inclusion goals with the entire child support team



Inclusion Promotes:

A large orange circle containing white text.

Social/Emotional
Growth
for
ALL students

A large green circle containing white text.

Academic
Achievement
for
ALL students

Inclusion = Social/Emotional Growth

- Empathy and Perspective Taking
- Collaboration
- Communication
- Relationship and Social Skills
- Self-Awareness
- Social-Awareness



Inclusion = Academic Achievement

- Opportunity for peer-peer learning (plus 1)
- Improved test scores in math and reading for students with disabilities
- Greater flexibility to demonstrate learning
- New ways of engaging with content



Preparing For Inclusion

The background of the slide is a solid orange color. On the right side, there is a faint, stylized graphic of several human figures in a circle, rendered in a lighter shade of orange. The figures are simplified, with circular heads and curved bodies, suggesting a group or community.

Engage Students in Team Meetings

- Consider when it is appropriate
- Don't wait till High School
- Provide time for student voice in the meetings
- Prep students ahead of time for the meetings

Develop Self-Advocacy Skills

- Self-Awareness
- Self-Confidence
- Self-Advocacy

Preparation = Seamless Transition



Way to Prepare

- Tour new spaces and places
- Buddy Up
- Practice with Sensory Inputs
- Meet all adults
- Create a non-punitive exit strategy
- Students view all spaces as their classrooms



A decorative background on the right side of the slide. It features a repeating pattern of stylized human figures in a darker shade of blue. The figures are arranged in a circular, swirling pattern, with their arms raised in a 'V' shape, suggesting a sense of movement or a crowd. The overall effect is a textured, organic feel.

Questions?